



Denmark Place, Bow, E3



Set within this contemporary modern development is this corner positioned, dual aspect, two bedroom apartment, benefiting from light and space and a good location viewing is highly recommended.



- Two Bedrooms
- Bow Road Tube Station A Moments Walk Away
- Modern Interiors
- Available 24th August
- Envious Location
- Manicured Communal Gardens To Enjoy
- Off Street Parking Space
- Part Furnished

Situated on the second floor the property is bathed in natural light, boasts modern interiors and has a secure allocated parking space. Composed of a stylish fully fitted kitchen, separate reception room, modern bathroom, master bedroom and further double bedroom.

The development is enviably located in the heart of Bow having both Bow Road Underground, Bow Church DLR and Devons Road Stations on its door step. Victoria Park, Westfield Shopping Centre and The Queen Elizabeth Olympic Park are all within easy reach.

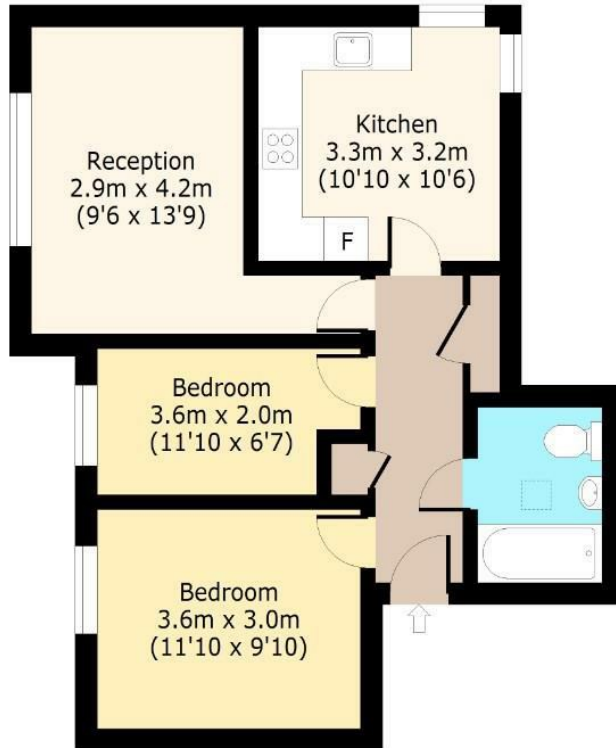




Denmark Place, E3

Second Floor

Approx. 56.11 Sq. meters (604 Sq. feet)



Total area: approx. 56.11 Sq. meters (604 Sq. feet)

For illustration purposes only - not to scale

www.lpaplus.com

IMPORTANT NOTICE - These particulars have been prepared in good faith and they are not intended to constitute part of an offer or contract. We have not performed a structural survey on this property and the services, appliances and specific fittings have not been tested. All photographs, measurements, floor plans and distances referred to are given as a guide and should not be relied upon.

BUTLER & STAG

☎ 020 8102 1236

🏠 508 Roman Road, Bow, London, E3 5LU

✉ bow@butlerandstag.com

www.butlerandstag.uk